



JMJ



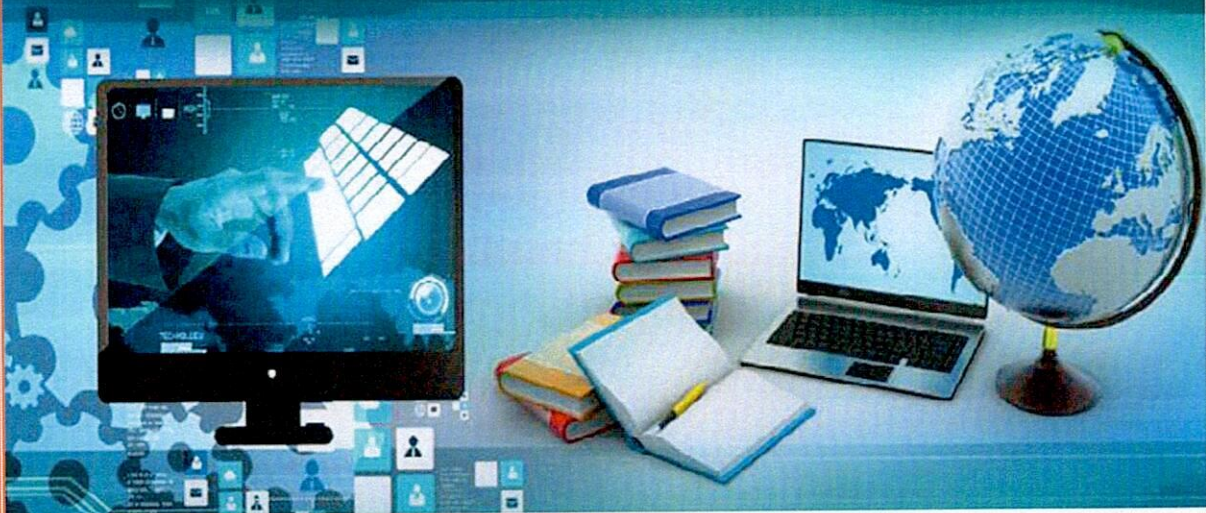
ISO Certificate No.
Q9186414992

COLLEGE FOR WOMEN (AUTONOMOUS), TENALI - 522 202

Affiliated to Acharya Nagarjuna University



Rev. Fr. MATHIAS WOLFF S.J.
FOUNDER - SOCIETY OF JMJ



CONSULTANCY POLICY

Consultancy Policy:

The interaction between institutions and interaction is the need of the hour. If we want to meet the needs of the society at large the institute must closely work with industries and different organizations.

The industries and organizations are facing various types of problems and many of them would like to have help from the academic institutes and find out solutions to their problem. For that the institute has planned to have the following activities.

Industry sponsored research project (Consultancy): An organization can sponsor a project and the experts of the institution concerned can analysis the project for which the financial support will come from the organization. As a result if any patent in registered then there shall be a sharing of income arising out of the patent among the industry researcher and institute. It leads to the following benefits.

- The researcher will set exposure to the concerned area of research.
- The industry will set solutions to its problems.
- The researcher, institute and industry can earn money to then the society ultimately will benefit.

Financial support received from any organization is divided into the ration and the funds will be given to faculty I.e. principal investigator of the project and remaining funds transferred to institute for overheads.

Interdisciplinary Research: The interdisciplinary research plays an important role now-a-days. No department, institution or researcher can address a research problem without involvement of other disciplinary. Therefore the institute has decided to have exercise in multi disciplinary research activities for which the following initiation will be taken.

- Identify an interdisciplinary area.
- Identify the different faculty from concern disciplinary who can work together.




- Study the requirement of infrastructure facilities conduct multi disciplinary research.
- Explore the possibilities to find resources for such interdisciplinary research.

Collaborative Research

JMJ College encourages faculty to pursue collaborative research activity with industries, institutions and other agencies of professional and social relevance the range of activities could include training, student exchange, and faculty exchange research sharing among others. Collaborating researches must consider and decide to manage the following issues prior to the commencement of the research project .Ethics approval and safety clearance.

- Authorship and publication.
- Management of research data and primary materials.
- Conflicts of interest.
- Financial management and commercial returns.
- Reporting to appropriate agencies.
- Project achievement criteria.
- Invoicing and payment.
- Involvement of students and any impact on publications.
- Intellectual property and copy rights




PRINCIPAL
PRINCIPAL
JMJ COLLEGE FOR WOMEN (Autonomous)
TENALI